

⚠ Instructions for use

EN

# Similasan Itchy Eye

Eye drops 10 ml

## What is Similasan Itchy Eye?

Similasan Itchy Eye is designed to moisturise the eyes in order to alleviate eye discomfort.

## When to use Similasan Itchy Eye?

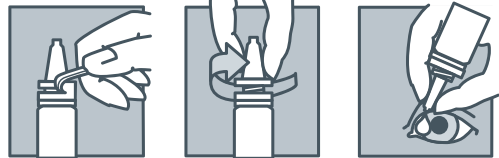
- Similasan Itchy Eye is a sterile eye drop which gently moisturises and so *quickly* relieves, soothes, cools, calms and lubricates, itchy and irritated eyes caused by allergies. Thanks to the unique composition of Similasan Itchy Eye, which has a balanced pH, Similasan Itchy Eye quickly soothes and gently calms itchy, red, swollen eyes caused by pollen (hay fever), pets, dust mites, mould spores, cosmetics, perfumes, ozone or other external causes.
- Similasan Itchy Eye can be used regularly to soothe and reduce symptoms caused by allergies, as long as needed.

## How do you use Similasan Itchy Eye?

Dosage:

Apply 1 - 2 drops in each eye, one or several times per day.

The length of the moistening effect and therefore and therefore soothing, cooling, calming and lubrication after one application varies for each individual. Reapply as needed.



## Directions:

- Remove tamper-evident seal from neck of bottle.
- Twist cap off bottle.
- Squeeze plastic tip to release 1 - 2 drops into eye.
- Apply as needed.
- Replace cap after use.

## Instructions for safe use:

It is important to follow these instructions. Do not touch the eye with the container. In order to avoid microbial contamination (bacteria) to not touch the opening of the dropper, and ensure the bottle is closed immediately after use.

### Warnings and precautions:

- Use only if the bottle seal is intact.
- Do not use Similasan Itchy Eye in cases of known hypersensitivities or allergies to any of the ingredients.
- If you experience hypersensitivity while using Similasan Itchy Eye, stop using Similasan Itchy Eye.
- If symptoms persist or become worse, please consult your pharmacist or doctor.
- Do not use in children under 2 years of age.
- During pregnancy and while breast-feeding and as a precautionary measure, do not use this product without prior consultation with your doctor or pharmacist.
- In cases of inflammation of the eye, the wearing of contact lenses is not advised.

### Side effects:

- With Similasan Itchy Eye, no side effects have been observed to date. If you experience any side effects while using this product, stop using it and consult your doctor or pharmacist.
- With Similasan Itchy Eye, no drug interactions have been observed to date.  
As a precautionary measure before using this product consult your doctor or pharmacist if you suffer from any other diseases, illnesses, allergies or if you are taking other medication (even those bought by yourself).

### How to store Similasan Itchy Eye:

- Store at room temperature (below 25 °C).
- Keep out of sight and reach of children.
- Discard 30 days after first use. Do not use after expiration date on the packaging «EXP».



### What ingredients are in Similasan Itchy Eye?

Ingredients: Aqueous borate buffer solution isotonised with sodium nitrate, Euphrasia officinalis and Schoenocaulon officinale.  
Preservative: Silver sulfate.

### What packs of Similasan Itchy Eye are available?

- Similasan Itchy Eye is available as:
- Bottle of 10 ml (with preservative)
  - Set of 10 single-use droppers of 0.4 ml each (preservative-free)



Similasan AG, Chriesiweg 6,  
CH-8916 Jonen, Switzerland

### Distribution Company

Precision Healthcare Ltd.,  
Precision House, Lamdin Road,  
Bury St Edmunds, IP32 6NU, UK.  
Tel: 01284 718900  
www.similasan.com

### Date of Issue:

May 2015.